



# Flight Plan & Site Survey

Created using RPAS Wilco®

Operation Name:	Summerland New
Pilot Name:	██████████
Pilot Certificate:	██████████
Flight Start:	September 25, 2023 4:07 PM
Flight End:	September 25, 2023 6:07 PM
Flight Area (Latitude):	49° 28' 9.00" N ( 49.469 )
Flight Area (Longitude):	119° 22' 8.00" W ( -119.369 )
Altitude - Radius:	Alt: 400 ft - Rad: 740.8 m ( 0.4 nm)
Airspace:	UNCONTROLLED
FIR - Contact:	CZVR - 604-586-4500

Please ensure you received all required authorizations prior to flight.

## Disclaimer

This Site Survey was created using RPAS Wilco by AIM Robotics. The flight plan contained is intended only for RPAS flights on the date/time and location specified. The user accepts all responsibility for the accuracy and completeness of the information contained.

For the complete Terms & Conditions, see

<https://rpswilco.com/#/tnc>



## Included

- Site Survey
- Obstacles (if available)
- Nearby Aerodromes
- Canadian Aviation Regulations
- GFA
- Aerodrome Supplements
  - METAR & TAF (if available)
  - NOTAMS
  - CFS

## Flight Map



## MAP Details

	Latitude	Longitude
 MODEL	49° 28' 9.00" N ( 49.469 )	119° 22' 8.00" W ( -119.369 )
 Pilot	49° 28' 12.60" N ( 49.4702 )	119° 22' 11.60" W ( -119.3699 )

## Airspace Classification



## Overlying Airspaces

Class	Name	Floor	Ceiling
B	Kelowna/Penticton, BC TA	12500MSL	18000MSL
E	Kelowna/Penticton, BC TA	700AGL	12500MSL
E	Penticton, BC CAE	2200AGL	12500MSL
B	Penticton, BC CAE	12500MSL	18000MSL
E	Kelowna/Penticton XPNDR MANDTRY	6500MSL	12500MSL
B	V300 Airway	12500MSL	18000MSL
E	V300 Airway	2200AGL	12500MSL
E	T703 Airway	2200AGL	12500MSL
B	T703 Airway	12500MSL	18000MSL
E	Williams Lake, BC CAE	8000MSL	12500MSL
B	Williams Lake, BC CAE	12500MSL	18000MSL

## Nearest Aerodromes & Distance from Operation

PENTICTON (CYYF AERODROME Cert)	Lat: 49.463 Long: 119.602	16.86 KM	9.1 NM
PENTICTON REGIONAL HOSPITAL (CPH6 HELIPORT Cert)	Lat: 49.482 Long: 119.576	15.032 KM	8.12 NM
NARAMATA (CNM6 HELIPORT Reg)	Lat: 49.603 Long: 119.579	21.245 KM	11.47 NM

# Canadian Aviation Regulations

## Division III — General Operating and Flight Rules

For full listing please visit <https://laws-lois.justice.gc.ca/eng/regulations/SOR-96-433/FullText.html#s-901.27>

### Visual Line-of-sight

- **901.11 (1)** Subject to subsection (2) no pilot shall operate a remotely piloted aircraft system unless the pilot or a visual observer has the aircraft in visual line-of-sight at all times during flight.
- **(2)** A pilot may operate a remotely piloted aircraft system without the pilot or a visual observer having the aircraft in visual line-of-sight if the operation is conducted in accordance with a special flight operations certificate — RPAS issued under section 903.03.

### Procedures

- **901.23 (1)** No pilot shall operate a remotely piloted aircraft system unless the following procedures are established:
  - **(a)** normal operating procedures, including pre-flight, take-off, launch, approach, landing and recovery procedures; and
  - **(b)** emergency procedures, including with respect to
    - **(i)** a control station failure,
    - **(ii)** an equipment failure,
    - **(iii)** a failure of the remotely piloted aircraft,
    - **(iv)** a loss of the command and control link,
    - **(v)** a fly-away, and
    - **(vi)** flight termination.
- **(2)** If the manufacturer of the remotely piloted aircraft system provides instructions with respect to the topics referred to in paragraphs (1)(a) and (b), the procedures established under subsection (1) shall reflect those instructions.
- **(3)** No pilot shall conduct the take-off or launch of a remotely piloted aircraft unless the procedures referred to in subsection (1) are reviewed before the flight by, and are immediately available to, each crew member.
- **(4)** No pilot shall operate a remotely piloted aircraft system unless the operation is conducted in accordance with the procedures referred to in subsection (1).

### Site Survey

**901.27** No pilot shall operate a remotely piloted aircraft system unless, before commencing operations, they determine that the site for take-off, launch, landing or recovery is suitable for the proposed operation by conducting a site survey that takes into account the following factors:

- **(a)** the boundaries of the area of operation;
- **(b)** the type of airspace and the applicable regulatory requirements;
- **(c)** the altitudes and routes to be used on the approach to and departure from the area of operation;
- **(d)** the proximity of manned aircraft operations;
- **(e)** the proximity of aerodromes, airports and heliports;
- **(f)** the location and height of obstacles, including wires, masts, buildings, cell phone towers and wind turbines;
- **(g)** the predominant weather and environmental conditions for the area of operation; and
- **(h)** the horizontal distances from persons not involved in the operation.

### Operations at or in the Vicinity of an Aerodrome, Airport or Heliport

- **901.47 (1)** No pilot shall operate a remotely piloted aircraft at or near an aerodrome that is listed in the *Canada Flight Supplement* or the *Water Aerodrome Supplement* in a manner that could interfere with an aircraft operating in the established traffic pattern.
- **(2)** Subject to section 901.73 no pilot shall operate a remotely piloted aircraft at a distance of less than
  - **(a)** three nautical miles from the centre of an airport; and
  - **(b)** one nautical mile from the centre of a heliport.
- **(3)** No pilot shall operate a remotely piloted aircraft at a distance of less than three nautical miles from the centre of an aerodrome operated under the authority of the Minister of National Defence unless the operation is conducted in accordance with a special flight operations certificate — RPAS issued under section 903.03.

### Records

- **901.48 (1)** Every owner of a remotely piloted aircraft system shall keep the following records:
  - **(a)** a record containing the names of the pilots and other crew members who are involved in each flight and, in respect of the system, the time of each flight or series of flights and
  - **(b)** a record containing the particulars of any mandatory action and any other maintenance action, modification or repair performed on the system, including
    - **(i)** the names of the persons who performed them,
    - **(ii)** the dates they were undertaken,
    - **(iii)** in the case of a modification, the manufacturer, model and a description of the part or equipment installed to modify the system, and
    - **(iv)** if applicable any instructions provided to complete the work.
- **(2)** Every owner of a remotely piloted aircraft system shall ensure that the records referred to in subsection (1) are made available to the Minister on request and are retained for a period of
  - **(a)** in the case of the records referred to in paragraph (1)(a), 12 months after the day on which they are created; and
  - **(b)** in the case of the records referred to in paragraph (1)(b), 24 months after the day on which they are created.
- **(3)** Every owner of a remotely piloted aircraft system who transfers ownership of the system to another person shall, at the time of transfer, also deliver to that person all of the records referred to in paragraph (1)(b).

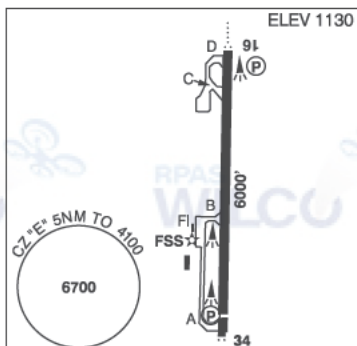
## BRITISH COLUMBIA

## AERODROME/FACILITY DIRECTORY

## PENTICTON BC

CYFF

<b>REF</b>	N49 27 45 W119 36 08 1.8SW 16°E (2015) UTC-8(7) Elev 1130' A5004 A5005 LO2 HI3 CAP RCAP
<b>OPR</b>	TC APM 250-809-4596 Admin 250-770-4422 1600-0030Z± Mon-Fri exc hols H24 Cert
<b>PF</b>	A-1,3,6 B-5 C-4
<b>CUST</b>	AOE/30 (120 with staged off-loading) CANPASS 1-888-226-7277 Permit holders H24 Non-permit holders 1630-0030Z± Mon-Fri
<b>FLT PLN</b>	
<b>FIC</b>	Kamloops 866-WXBRIEF (Toll free within Canada) or 866-541-4101 (Toll free within Canada & USA)
<b>WX</b>	METAR H24. TAF H24, issue times: 01, 07, 13, 19Z.



## SERVICES

<b>FUEL</b>	100LL, JA-1 14-05Z± Mon-Fri 15-04Z± Sat-Sun
<b>OIL</b>	80, 100, 120, 15W50
<b>S</b>	1,2
<b>JASU</b>	CE15 West Jet Encore or Air Canada Express
<b>MILCON</b>	Executive Flight Centre Fuel 250-493-5323

## RWY DATA

Rwy 16(165°)/34(345°) 6000x148 ASPH Thld 34 displ 300'.

RWY CERT Rwy 16/34 AGN IIIB

## APRON

GA prkg on apron N of tml only. Park on N and NE edges. Non-wheeled heli prkg avbl on grass N of main apron. Itinerant pilot and pax access via Gate 88. Lgt acct prkg avbl off Twy A, S end.

Wildfire Heli Ops: Staging and extended prkg on grass N of tml and maint fac, and S of Air Tanker Base along W fence. PPR required for all prkg. Prkg fees.

## RCR

Opr Ltd win maint 15-01Z± Mon-Fri, 17Z± & 23Z± Sat-Sun & hols Nov 1-Mar 31, O/T 2 hr PN call out chg may be levied. CRFI, PLR/PCN

## LIGHTING

16-AO(TE ME) P2, 34-AS(TE ME) P2

PAPI limitation/restriction. PAPI Rwy 34 to be used only within 2NM of thld

## COMM

<b>RADIO</b>	118.5 PTC avbl (V) (emerg only 250-492-3001)
<b>GND ADV</b>	121.9 (emerg only 250-492-3001)
<b>MF</b>	rdo 118.5 5NM 4100 ASL (CAR 602.98)

## NAV

**DME** IYF 110.3 Ch 40 N49 27 09 W119 36 14 (1134') reliable only within 10° of centreline

**LOC** IYF 110.3 reliable only within 10° of centreline

## BRITISH COLUMBIA

## AERODROME / FACILITY DIRECTORY

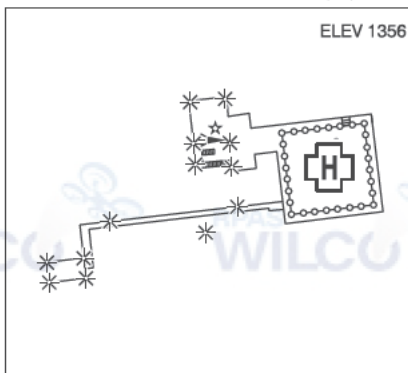
## PENTICTON BC (Cont'd)

CYYF

<b>PRO</b>	<p>Inbd tfc see VTPC; for night circuit pro see Night Circuit VTPC. Circuit hgt 2300 ASL. Rgt hand circuits Rwy 34 (CAR 602.96). Heli tng all quadrants, circuits E &amp; W of A/D at 2300 ASL.</p> <p><b>GROUND ADVISORY:</b> The Minister has authorized specific operating restrictions regarding communications intended for the MF, as well as the introduction of a Ground Advisory frequency (GND ADV) pursuant to CARs 602.97(2), 602.98(1) and 602.99.</p> <p><b>Departure procedure:</b> Prior to taxi for departure; contact GND ADV on 121.9 for clearance and initial advisory information. After receiving initial advisory information, GND ADV will initiate communication transfer to RADIO on 118.5 prior to entering the runway/departure surface. Pilots are required to ascertain that there is no likelihood of collision with another aircraft or a vehicle prior to departure as stated in CAR 602.96 2a) and b).</p> <p><b>Arrival procedure:</b> After exiting the runway/arrival surface and reporting clear on the radio frequency, pilots will be directed to contact GND ADV on 121.9 for ground traffic and taxiing information before entering the taxiway.</p>
<b>CAUTION</b>	<p>Only pilots familiar with local terrain should use this aprt dur hrs of darkness. Ngt ops not recommended unless all 7 hazard beacons oprg. Extv heli activity at A/D dur daylight hrs all quads. Due to high terrain, it is recommended pilots proceeding E or W under VFR, attain an alt of 5,000' (ASL) min before leaving the Okanagan Valley. Hi terrain reduces operational length of Rwy 34 PAPI.</p>

## PENTICTON REGIONAL HOSPITAL BC (Heli)

CPH6



<b>REF</b>	N49 28 54 W119 34 34 Adj 17°E (2018) UTC-8(7) Elev 1356' A5004 A5005
<b>OPR</b>	Interior Health Authority 250-462-3785 Cert PPR
<b>PF</b>	B-1
<b>FLT PLN</b>	
<b>FIG</b>	Kamloops 866-WXBRIEF (Toll free within Canada) or 866-541-4101 (Toll free within Canada & USA)
<b>HELI DATA</b>	FATO 86' x 86' non-supporting TLOF 60' x 60' CONC Safety Area 115' x 115' 17,000 lbs Max heli overall length 57.4' (CAR 602.96). Elevated/rooftop heli.
<b>RCR</b>	Opr
<b>LIGHTING</b>	RY(ME) green LED ARCAL-123.2 type K
<b>COMM</b>	
<b>MF</b>	Penticton rdo 118.5 5NM 4100 ASL (CAR 602.98)
<b>PRO</b>	Arr/dep 335° fr heli (H1), day/night use (CAR 602.96) Arr/dep 078° to 170° fr heli (H1), day/night use (CAR 602.96)

## BRITISH COLUMBIA

## AERODROME/FACILITY DIRECTORY

## NARAMATA BC (Heli)

CNM6

<b>REF</b>	N49 36 10 W119 34 43 1ENE 16°E (2015) UTC-8(7) Elev 1872' A5004 A5005
<b>OPR</b>	Finnair Ltd 250-770-0702 Reg PPR
<b>FLT PLN</b>	
<b>FIC</b>	Kamloops 866-WXBRIEF (Toll free within Canada) or 866-541-4101 (Toll free within Canada & USA)
<b>HELI DATA</b>	75' x 75' GRVL 200'x 200' max heli length 50', max 8000 lbs
<b>RCR</b>	Opr Days only
<b>COMM</b>	
<b>ATF</b>	ftc 123.2 0.5NM 2200 ASL
<b>PRO</b>	Dep/arr over abandoned railway to minimize noise. (Monitor Penticton 118.5 - See Penticton VTPC)
<b>CAUTION</b>	Power lines SSW of pad.

